

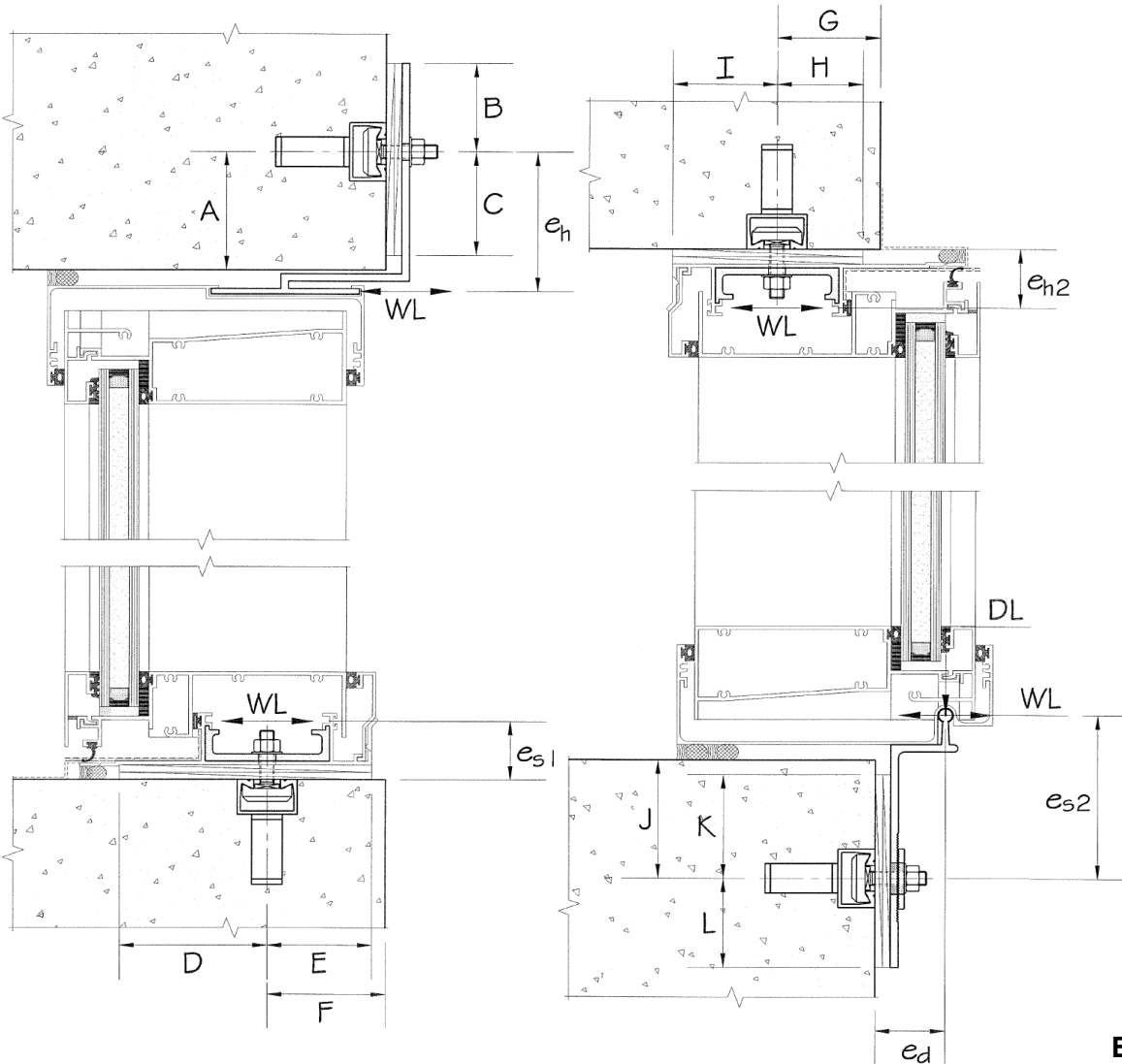
## HALFEN CURTAIN WALL PUNCHED WINDOW ANCHORING QUESTIONNAIRE

— In order for us to be able to select the most efficient anchoring systems for your project, please:

1. Please provide "A" through "L" and " $e_h$ ,  $e_s$ ,  $e_d$ , & Bolt spacing" for custom clips (by others), as applicable.
2. Fill required information, questions 1 to 5, under 'Project Information'
3. Fax to 210-658-7908, e-mail to [halfen@meadowburke.com](mailto:halfen@meadowburke.com) or e-mail to Sales representative.

### CLIP INQUIRY

#### CUSTOM CLIP



NOTE: Please show units.

A:

B:

C:

D:

E:

F:

G:

H:

I:

J:

K:

L:

$e_{h1}$ :

$e_{s1}$ :

$e_{h2}$ :

$e_{s2}$ :

$e_d$ :

Bolt spacing:

#### PROJECT INFORMATION

1. Project Name:
2. Concrete Strength [f'c]:  psi
3. Location: City:  State:   Normal Weight Concrete  Light Weight Concrete
4. Dead Load 'DL':  lb
5. Wind Load 'WL':  lb

— If (4) "DL" and/or (5) "WL" are not know, please provide the following:

6. Window Height:  ft
7. Window Width or Mullion Centers:  ft
8. Window System Weight:  psf
9. Wind Pressure:  psf
10. Wind Suction:  psf

NOTE: If dimensions and loads are in metric, please show units.

### MEADOW-BURKE PRODUCTS