

GLAZING **MASONRY** CHANNEL STONE TENSION RODS

## MASONRY



### LINTEL SYSTEMS & MASONRY ANCHORS

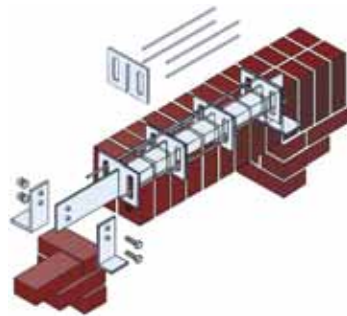
#### CONCEALED LINTEL SYSTEM

Virtually any flat or arched masonry lintel can be accomplished without any exposed steel, using Halfen Anchoring Systems' concealed lintel system. High-end residential, commercial, and institutional projects can now have all-brick soffit masonry openings that are aesthetically pleasing and maintenance-free. Halfen's technical department uses the architect's conceptual design to engineer a lintel support system for each specific opening. Unlimited combinations utilizing different brick size, coursing, span, soffit width, and arch geometry can be designed and manufactured to meet the project specifications. New bolted system is field-adjustable to accommodate brick size variations and construction tolerances. Concealed lintel systems are manufactured from hot dip galvanized carbon steel or stainless steel.



The Halfen concealed lintel system is designed to provide hidden supports for brickwork above openings, allowing the brickwork to remain the architectural focal point of the opening.

The basic system is suitable for simply supported masonry openings up to 10 ft [3,050mm] between piers. For conditions with heavier veneer loads, wider openings and more complicated arch profiles, Halfen can design and manufacture concealed lintel systems with intermediate supports connected to the building structure.

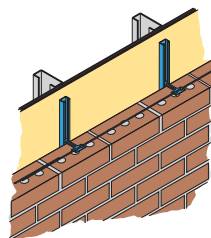


Other concealed lintel systems can also be provided with brick support brackets fastened directly to structural steel or precast beams within the wall cavity.

#### FLEMING MASONRY ANCHORS

Fleming masonry anchors are used to restrain masonry veneer. The system has three simple elements:

- Anchor Slot 10 ft [3,050mm] long nailed or screwed through sheathing into the framing studs at 16" [405mm] max spacing.
- Anchors 2", 3" or 4" [51, 76 or 102mm] long, secured into the tracks at horizontal joint lines at 12" [305mm] maximum vertical spacing.
- Reinforcement wire at the joint lines containing anchors.

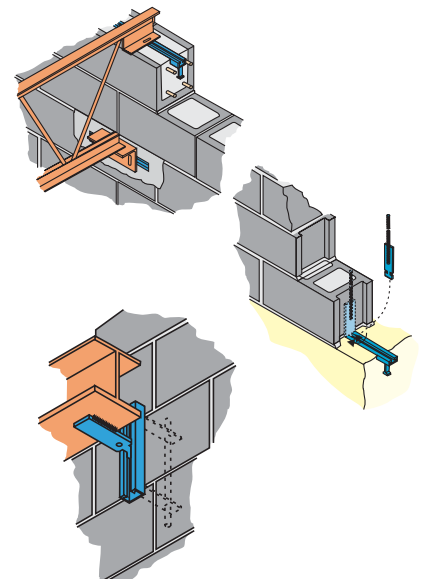


Approved for restraining masonry veneer in seismic zones, the Fleming anchors are available in pregalvanized carbon steel.

#### BLOCK WALL ANCHORS

Halfen anchor channels and accessories are used in many masonry block applications, including:

- Restraining masonry block walls to concrete structures.
- Starter restraints for reinforced masonry block walls, eliminating the unsafe practice of casting-in projecting starter rebars, or drilling and epoxying in rebars.
- Restraining the top of block and brick walls at the underside of concrete slabs.
- Providing anchor points for roof trusses at any position around the wall perimeter, when cast into bond beams at top of walls, eliminating preset hold-down bolts that are often misplaced.
- Installing anchor channels in mortar-filled patches in the faces of block walls to connect equipment or services.
- Blockwork anchors built into masonry block walls during erection.



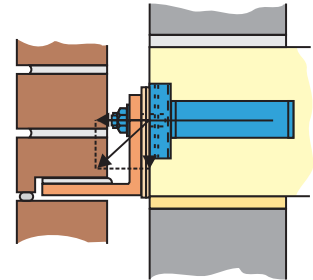
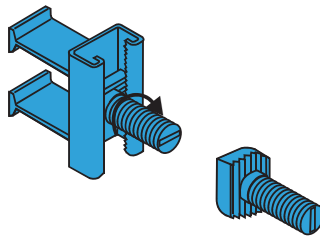
# MASONRY



## LINTEL SYSTEMS & MASONRY ANCHORS

### SHELF ANGLE SUPPORTS

Halfen's hot dip galvanized toothed anchor channels can be cast vertically into the face of concrete spandrel beams or slab edges as thin as 5" [140mm]. Steel shelf angles with horizontal slots at the fastening points are bolted to the embeds using toothed tee-bolts. This connection provides vertical adjustment of the shelf angle during installation; once fully fastened, the teeth resist any further vertical movement.



# STONE



## HANDSET STONEMWORK ANCHORS

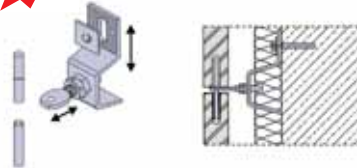
Halfen Anchoring Systems manufactures a broad range of handset stone anchors, and works closely with specifiers, architects, engineers and stone contractors to find solutions for the most complex stone anchoring conditions.

selection of standard and custom alternatives to suit the requirements of most projects. In addition, Halfen can provide design support and anchorage engineering.

HRM anchors are designed for 1-1/4" (30mm) thick slabs. Each anchor has working load capacity of 90 lbs. (400 N) per anchor, or 180 lbs. (800 N) per slab. Anchor design allows final adjustment with stone already in place, resulting in a substantial reduction in installation time.



### NEW HRM SERIES ANCHORS



The three-dimensionally adjustable HRM anchor permits a reliable and simple means of fixing natural stone panels or slabs. Exterior cladding with marble, granite, and natural stone is simple with pre-engineered, economical HRM product line.

### LUTZ AND SAK ANCHORS

Lutz adjustable body anchors are suitable for projects with gaps up to 10" (254 mm) and are capable of bearing up to 290 lbs (1.3 kN) per anchor.

SAK series are custom engineered kerf-style anchors designed and manufactured to meet project-specific requirements and specifications.

# HALFEN



## LITERATURE AVAILABLE FROM HALFEN

### GLAZING

- Multi-Adjustable Curtain Wall Clips
- Anchors for Glazing
- Top of Slab Bracket for Curtain Wall

### MASONRY

- Adjustable Concealed Lintel Systems
- Anchors for Masonry
- Fleming Masonry Veneer Restraint System

### STONE

- Anchors for Stonework
- HRM Stone Fixing Clips

### PRECAST

- Anchors for Precast Panels
- Application Details Anchors for Precast
- Double Tee Stem Anchors

### STAINLESS

- Halfen Products for Corrosive Environments

### TENSION RODS

- Detan Tension Rod System

### SOFTWARE

- AnkerCalc 1.1
- Anker CAD

### TECHNICAL

- Dynagrip Toothed Anchor Channels
- Halfen Technical Manual (Anchor Channels, T-bolts & Profiles)

### SPECS

- CSI 3-Part Specifications
- Product Data Sheets

### Available Formats

- Hard Copy Catalogs
- CD-Rom
- Website



DISCLAIMER: This brochure outlines the Halfen products intended for use in the North American marketplace, or on projects where North American design parameters have been used. All application illustrations shown in this publication are for guidance only and should not be taken as working drawings. Halfen reserves the right to amend, withdraw or make changes to products and specifications at any time with out written notice to customers, designers and users. It is the policy of Halfen Anchoring Systems to work with designers, specifiers, engineers and contractors in providing application assistance, suggestions and advice for the satisfactory solution of anchoring problems. However, all advice and drawings provided are subject to the approval of the design team, contractor or structural engineer, who take ultimate responsibility for proper product usage.



A division of Meadow Burke Products • P.O. Box 547 Converse, TX 78109  
Phone: 800-323-6896 or 210-658-4671 • Fax: 888-277-1695 or 210-658-7908  
halfen@meadowburke.com • www.halfenusa.com