



HTS Series: Standard Top-of-slab embeds

HTS6112 top of slab embed:

Pullout load capacity: 10,000 lbs.

Shear load capacity: 11,200 lbs.

Assuming the following conditions:

- Nominal edge distance for full capacity: 6"
- Pullout capacity with minimum edge distance of 2 ¼": 7,900 lbs.
- Minimum slab thickness: 7-1/4"

HTS6112TAL top of slab embed, long trimmed anchor:

Pullout load capacity: 7,650 lbs.

Shear load capacity: 11,200 lbs.

Assuming the following conditions:

- Nominal edge distance for full capacity: 5"
- Pullout capacity with minimum edge distance of 2 ¼": 6,250 lbs
- Minimum slab thickness: 6"

HTS6512TAS top of slab embed, short trimmed anchor:

Pullout load capacity: 4,850 lbs.

Shear load capacity: 11,200 lbs.

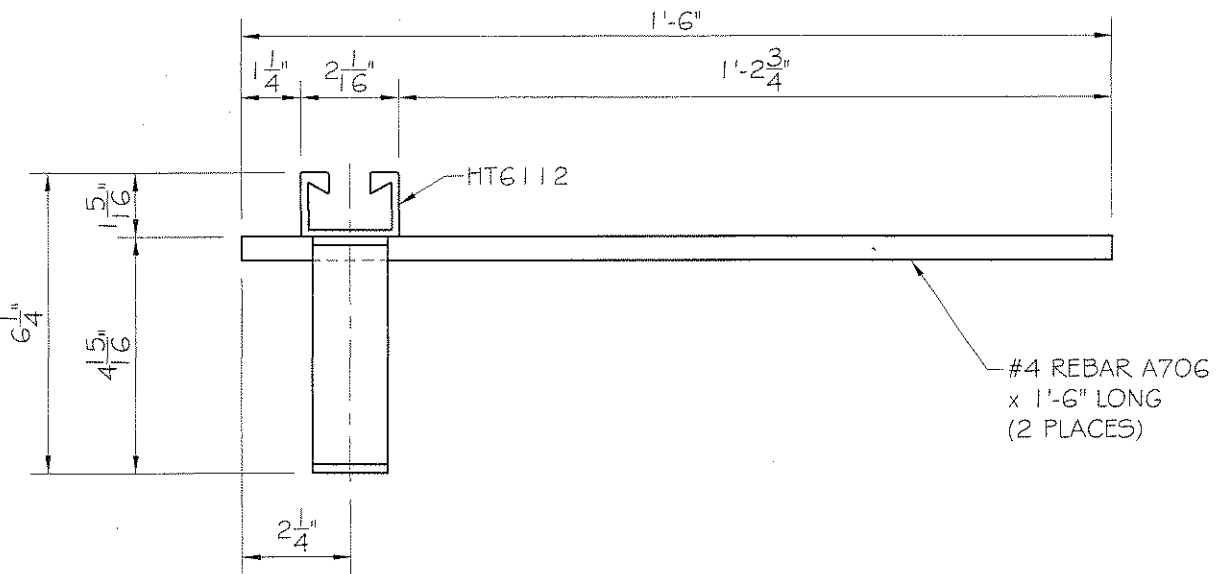
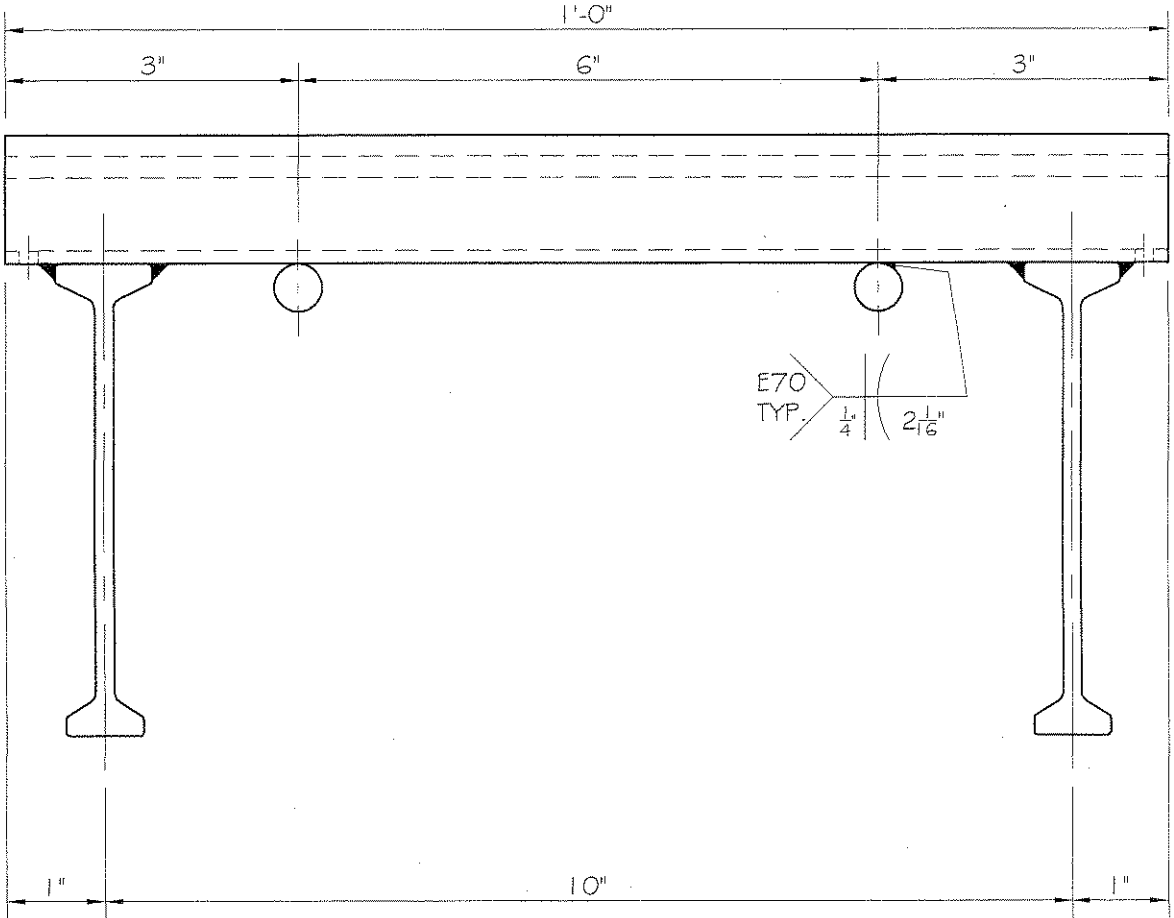
Assuming the following conditions:

- Nominal edge distance for full capacity: 4"
- Pullout capacity with minimum edge distance of 2 ¼": 4,450 lbs.
- Minimum slab thickness: 4-3/4"

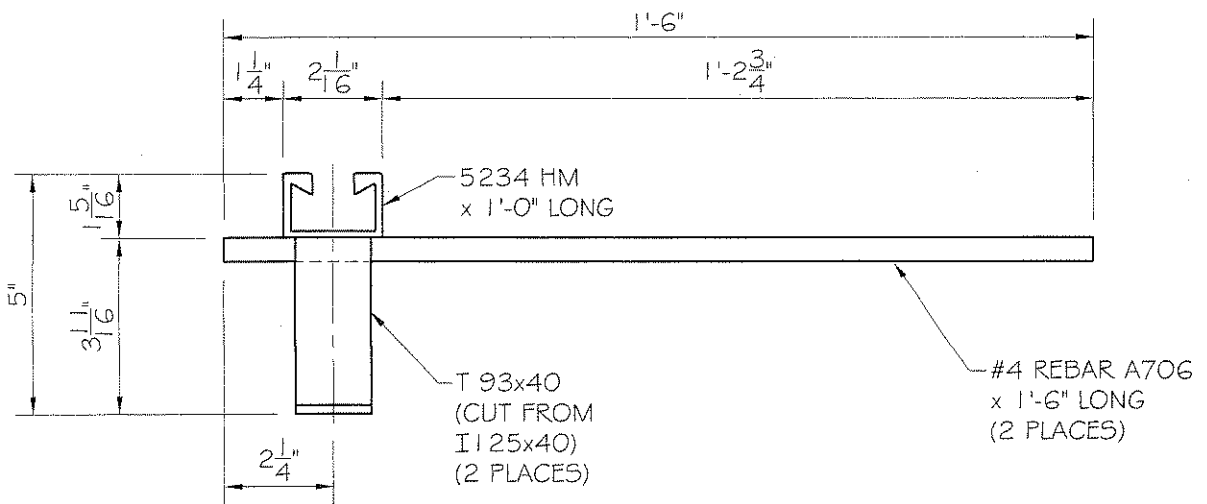
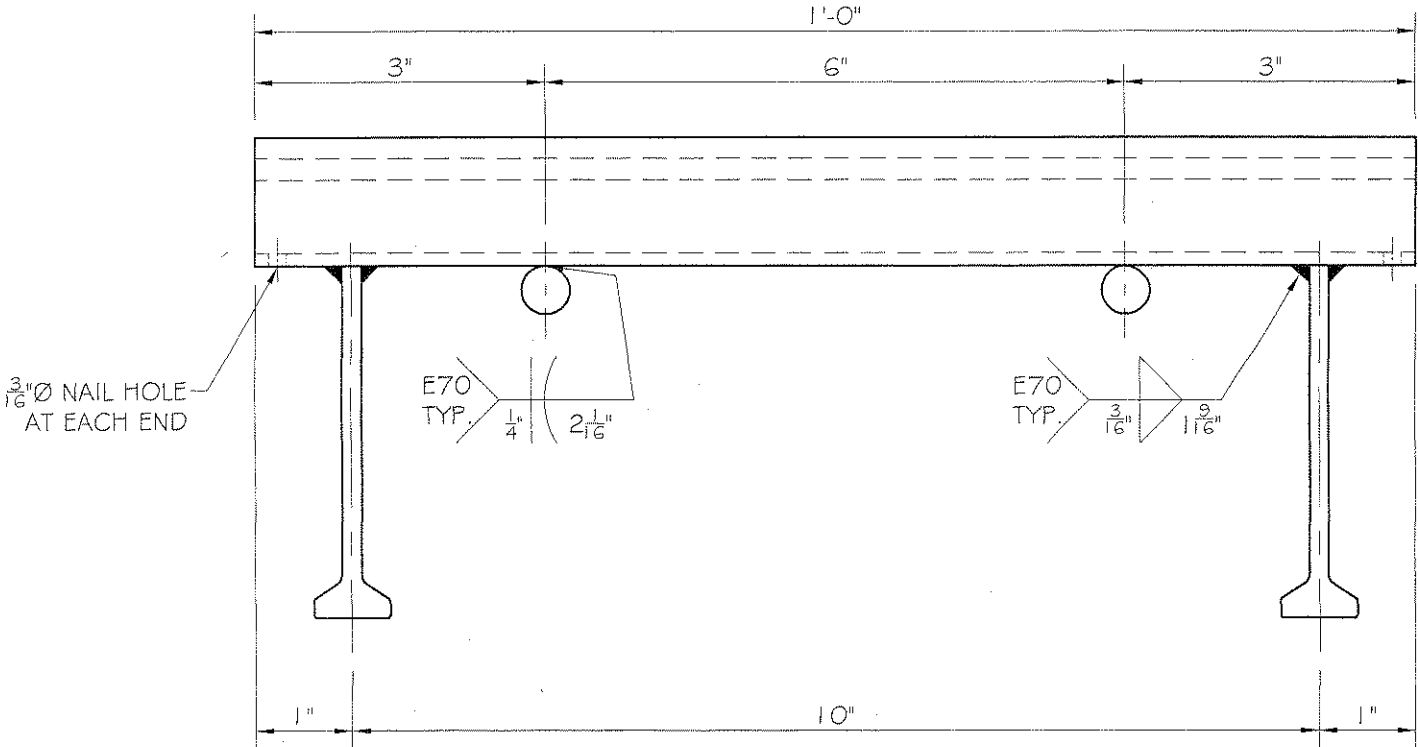
Notes:

1. Stated capacities for all embeds assume concrete strength $f'_c = 3000$ psi (normal weight), and a minimum clearance of rebar tails over metal deck of 1 ½".
2. HTS embeds for light weight concrete, with longer rebar tails, are also available.

HALFEN TOP OF SLAB ANCHOR CHANNEL - PART No. HTS6112



HALFEN TOP OF SLAB ANCHOR CHANNEL - PART No. HTSG112TAL



HALFEN TOP OF SLAB ANCHOR CHANNEL - PART No. HTSG5 I 2TA5

